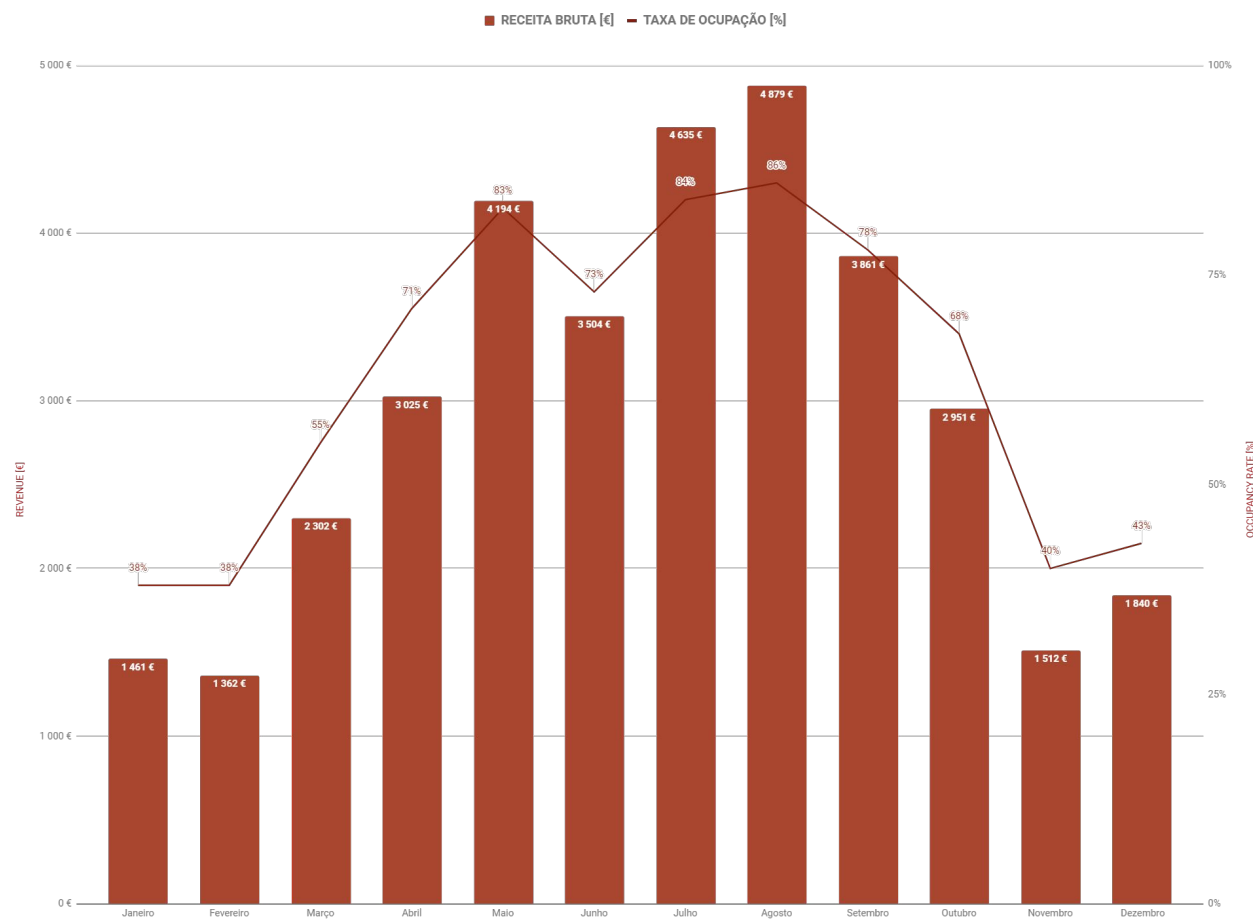


# RELATÓRIO DE RENTABILIDADE

Rua Augusta, Lisboa



PREÇO DE VENDA:  
680.000 €

RECEITA DE ALOJAMENTO:  
49.231 €

TAXA DE  
OCUPAÇÃO:  
64 %

DIÁRIA MÉDIA:  
201 €

YIELD BRUTO:  
7,24 %

2 Quartos  
Elevador  
Varanda  
Vista



## MANAGEMENT PLANS

### BASIC

10%+IVA

Pricing market research

Online listing & business travelers

Revenue Management

Personal account manager

Legal and Tax assistance

Check-in and Check-out

Cleaning and laundry coordination

Amenities and consumable good

Guest support 24/7

Welcome basket

Registration and communication to SEF

Tourism city tax

### COMPLETE

25%+IVA

Pricing market research

Online listing & business travelers

Revenue Management

Personal account manager

Legal and Tax assistance

Check-in and Check-out

Cleaning and laundry coordination

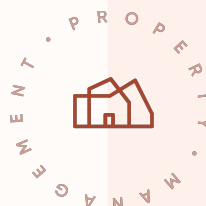
Amenities and consumable good

Guest support 24/7

Welcome basket

Registration and communication to SEF

Tourism city tax



GET STARTED

INFO@FEELING-INN.COM